

Watkins Lake State Park & County Preserve



July 11th, 2016



Watkins Lake State Park

Trolz Property





Watkins Lake State Park

Trolz Property





Watkins Lake State Park

Trolz Property

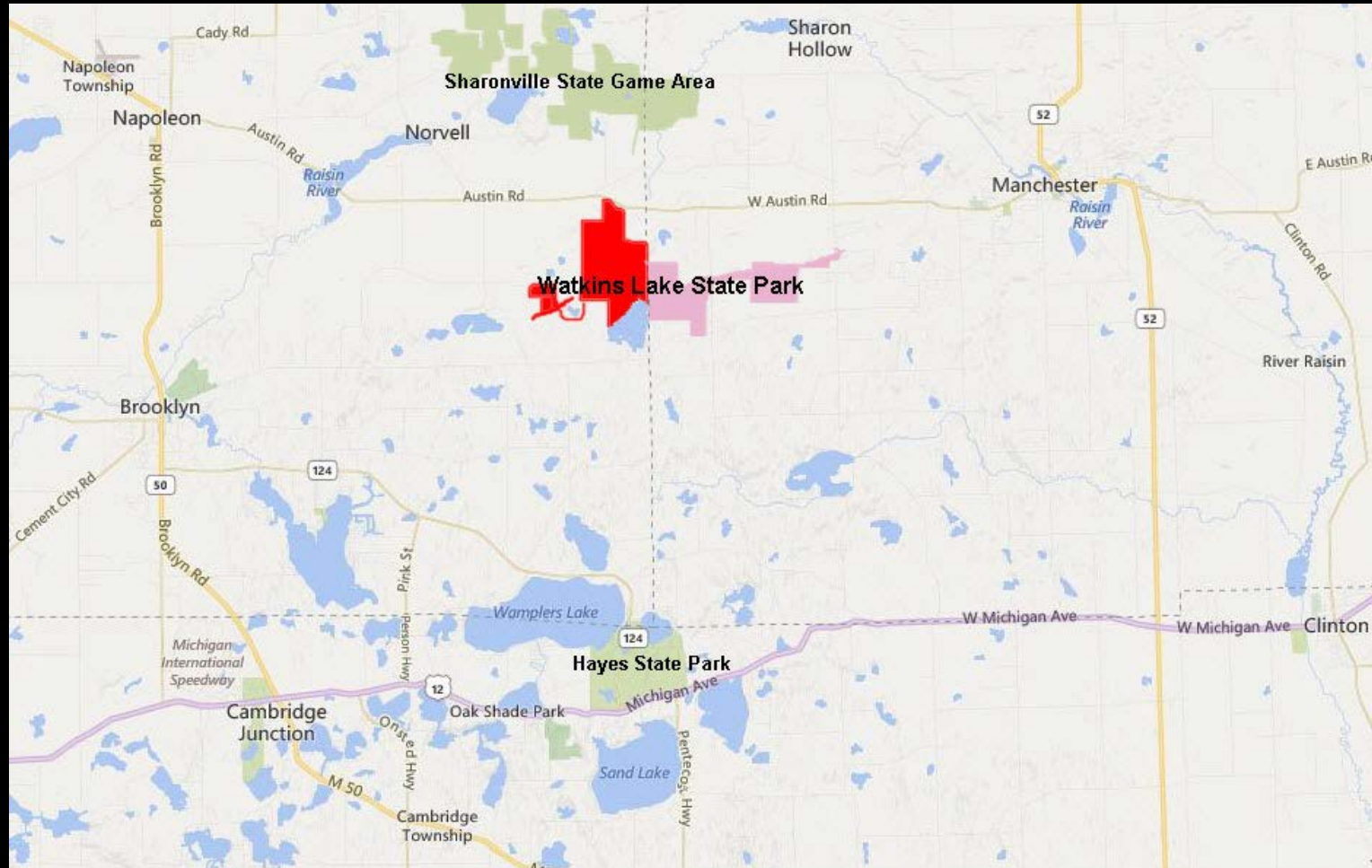




Watkins Lake State Park

Trolz Property

- 15 miles from Jackson, 25 miles from Ann Arbor

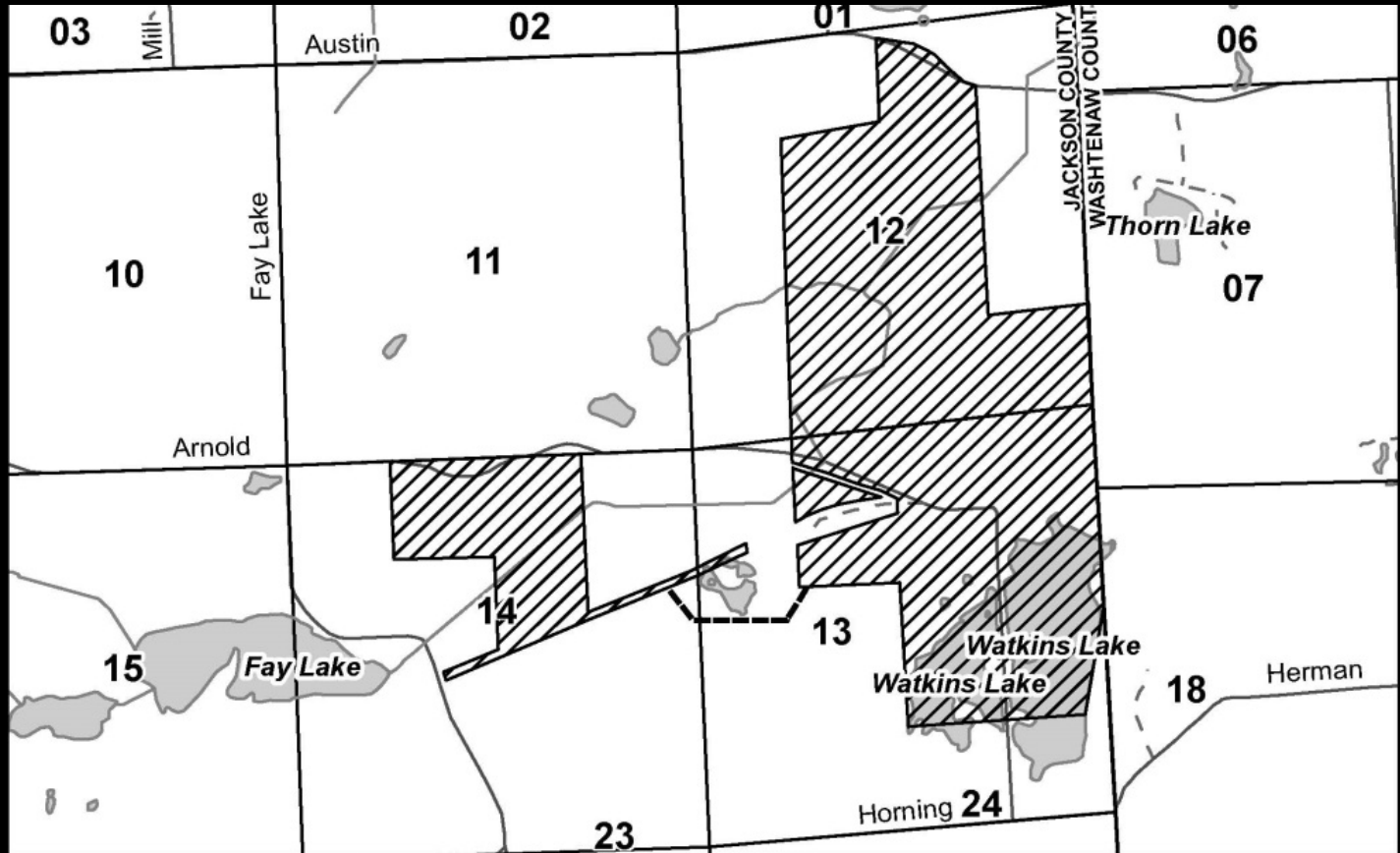




Watkins Lake State Park

Trolz Property

- 726 acres in Jackson County

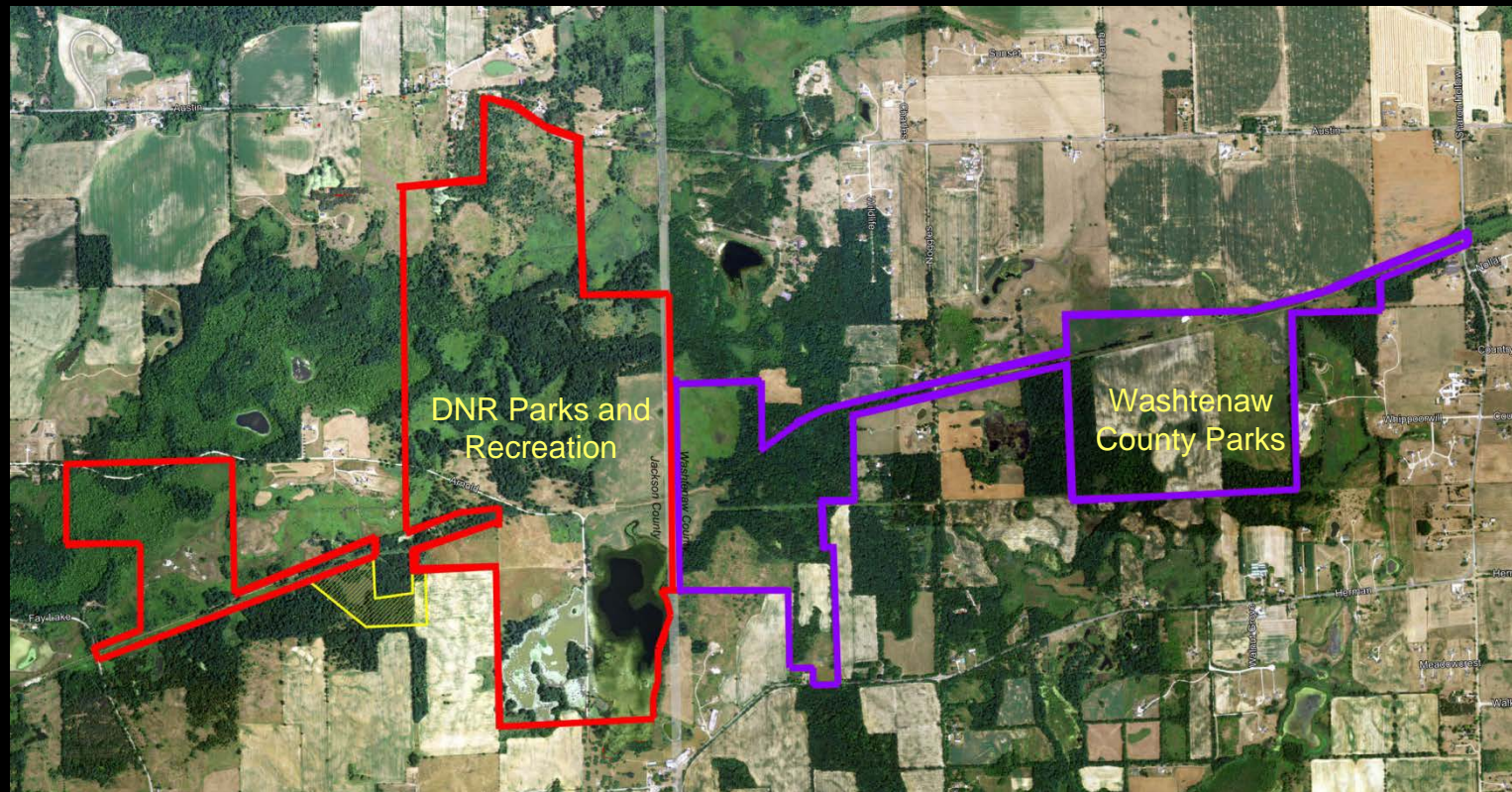




Watkins Lake State Park

Trolz Property

- 405 acres in Washtenaw County
- First State Park to be jointly managed and owned with County





Watkins Lake State Park

Trolz Property

RECREATION OPPORTUNITIES

- Hunting
- Fishing
- Hiking
- Wildlife viewing
- Regional trail connections (4.5 miles)
- Equestrian trail connections
- Historic interpretation
- Backcountry camping





Watkins Lake State Park

Trolz Property

NATURAL RESOURCES

- Deciduous forested uplands
- Emergent wetlands
- Grasslands and meadows
- Waterfowl production area/
migratory bird stop – Watkins Lake
- Deer, cottontail, wild turkey and
grassland birds
- Hudson Bay Flyway





Watkins Lake State Park

Trolz Property

CULTURAL RESOURCES

- Underground Railroad history
- Railroad depot site – Royal Watkins
- Only depot partially owned by a private party in the country





Watkins Lake State Park

Trolz Property

CONCLUSION

- Provides access to quality recreation opportunities
- Protects natural and cultural resources in Southern Michigan
- Provides regional trail connection opportunities



Thank You



www.michigan.gov/dnr